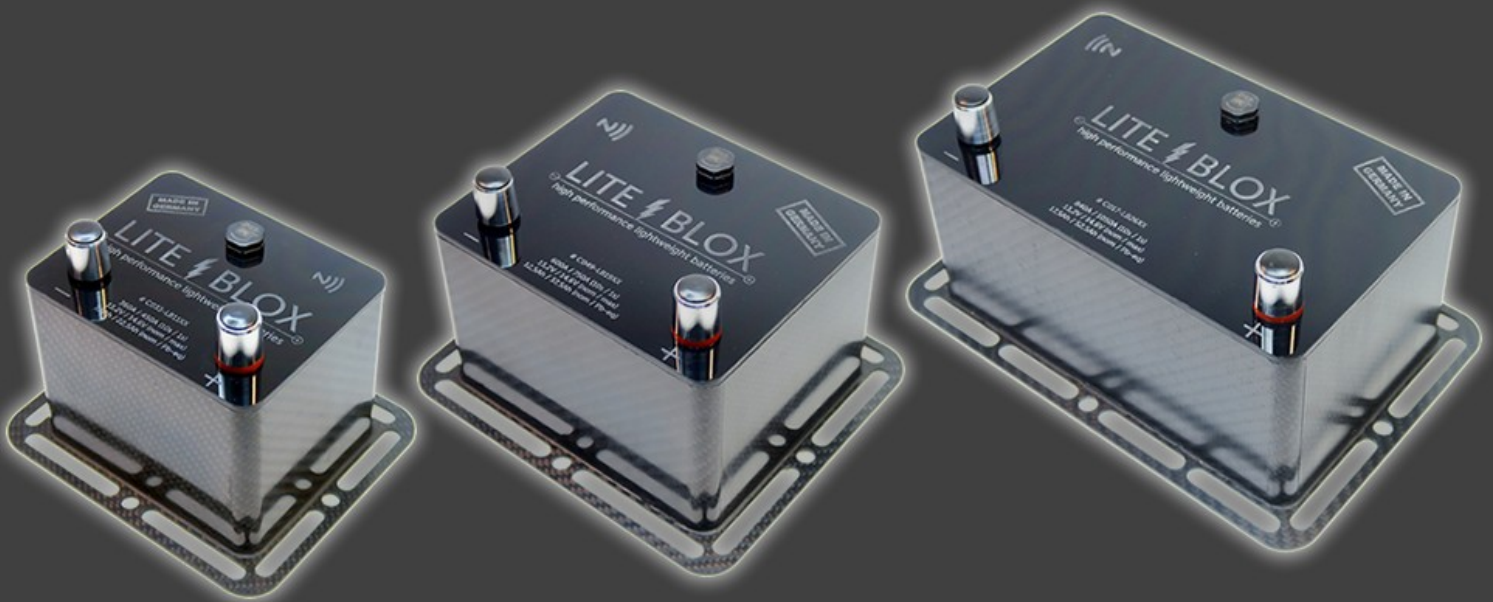


LITE BLOX

high performance lightweight batteries

Customer Information

LITEBLOX batteries ([GEN3](#))



The (r)evolutionary car battery

Our LITEBLOX batteries have been extensively engineered & set new standards in subtracting weight from your vehicle.

We use latest LiFePO4 storage technology, implemented in an innovative housing concept, to replace your standard starter battery by a device with less volume & weight.

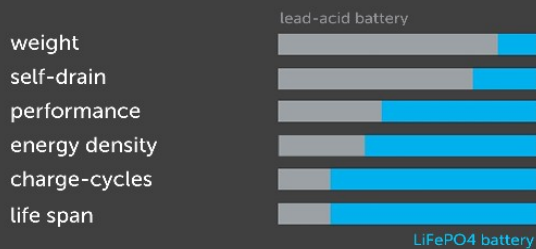
Engineered for professional motorsports & built by hand in our manufactory, we guarantee for outstanding quality & premium materials - [made in Germany](#).

Our innovative housing concept is shielding the cells from thermal + mechanical influences & therefore allows usage under extreme conditions, providing extended lifespan & safety.

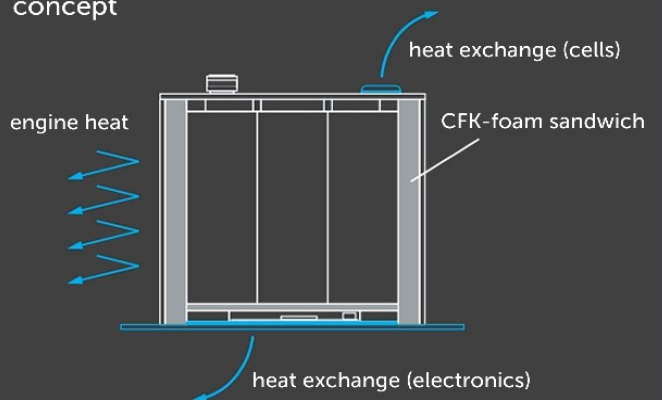
The intelligent electronics is monitoring the cells permanently and reports misuse, deep- or overcharge by an acoustic warning.

An integrated bracket provides variable installation for optimal weight balance in your vehicle:

advantages



concept



features

- saves up to 13-25kg compared to a standard battery (depending on the specs)
- works with hardly any car (with standard alternator)
- plug'n'play replacement for the standard battery
- maintenance-free by intelligent electronics with acoustic warning
- NFC interface for wireless data monitoring via smartphone
- rapid charging (optimal für Start-Stopp)
- marginally self-drain when not in use
- no fire hazard & fail safe due to cell structure
- moutable in any position (interior use allowed)
- tested in professional motorsport
- fully engineered & built by hand in Germany

LITEBLOX LB11XX



Our lightest high performance starter battery model comes in a CFK housing with implemented bracket, intelligent electronics including NFC-interface and aluminium pole terminals – engineered and built by hand in Germany.

price: 543,70Eur excl. VAT

technical data

- weight: 11XXg**
- dimensions: 123 x 97 x 100mm (l x b x h)
- voltage: 13,2V / 14,6V (nom / max)
- capacity: 7,5Ah / 22,5Ah (nom / Pb-eq)
- cranking current: 360A / 540A* (10s pulse / peak @ RT)
- operating temperature: -20 to +80°C
- lifespan: 3-5x compared to the OEM battery*
- connection: OEM clamp onto the battery poles (DIN) or via ring terminal (M8)
- certificates: product complies with directives 2001/95/EG 2011/65/EU 2006/66/EG
- delivery scope: LITEBLOX + pole caps + mounting material V2A + sticker + air refresher + manual

application

- 2-6 cylinder engines (1000-3000 ccm)
- limited daily car use (vehicle parking periods 1-3 weeks*)
- sportscar / tracktool / motorsport (sprint / rallye / hillclimb / slalom / trackday / time attack / dragracing) / custom bike / tuning / car-hifi / drone / boat ...

* depending on usage, setup, peripheral, etc.

** since every LITEBLOX is built by hand, there might be marginal deviations in these values

LITEBLOX LB19XX



Our allround high performance starter battery model comes in a CFK housing with implemented bracket, intelligent electronics including NFC-interface and aluminium pole terminals – engineered and built by hand in Germany.

price: 795,80Eur excl. VAT

technical data

- weight: 19XXg**
- dimensions: 149 x 123 x 100mm (l x b x h)**
- voltage: 13,2V / 14,6V (nom / max)
- capacity: 12,5Ah / 37,5Ah (nom / Pb-eq)
- cranking current: 600A / 900A* (10s pulse / peak @ RT)
- operating temperature: -20 to +80°C
- lifespan: 3-5x compared to the OEM battery*
- connection: OEM clamp onto the battery poles (DIN) or via ring terminal (M8)
- certificates: product complies with directives 2001/95/EG 2011/65/EU 2006/66/EG
- delivery scope: LITEBLOX + pole caps + mounting material V2A + sticker + air refresher + manual

application

- 6-8 cylinder engines (3000-6000 ccm)
- daily car use with restrictions (vehicle parking periods 3-5 weeks*)
- sportscars / tracktool / motorsport (race track circuit / 24h race / endurance / dragracing / formula F3 / NASCAR) / tuning / Car-Hifi / boat...

LITEBLOX LB26XX



Our flagship high performance starter battery model comes in a CFK housing with implemented bracket, intelligent electronics including NFC-interface and aluminium pole terminals – engineered and built by hand in Germany.

price: 1243,70Eur excl. VAT

technical data

- weight: 26XXg**
- dimensions: 202 x 123 x 100mm (l x b x h)**
- voltage: 13,2V / 14,6V (nom / max)
- capacity: 17,5Ah / 52,5Ah (nom / Pb-eq)
- cranking current: 840A / 1260A* (10s pulse / peak @ RT)
- operating temperature: -20 to +80°C
- lifespan: 3-5x compared to the OEM battery*
- connection: OEM clamp onto the battery poles (DIN) or via ring terminal (M8)
- certificates: product complies with directives 2001/95/EG 2011/65/EU 2006/66/EG
- delivery scope: LITEBLOX + pole caps + mounting material V2A + sticker + air refresher + manual

application

- 8-12 cylinder engines (4000-9000 ccm)
- daily car use without restrictions (vehicle parking periods 5-8 weeks*)
- sportscar / supercar / hypercar / tracktool / motorsport (race track circuit / 24h race / endurance / dragracing / formula F3 / NASCAR / GT / DTM) / tuning / Car-Hifi / boats ...

charger LB100Is



Our microprocessor based waterproof Charger can be used to charge any LITEBLOX battery model. With the 4-step charging program the battery will be charged safely in a fully automatic mode.

price: 125,21Eur excl. VAT

technical data

- model: LB100Is
- input / output: 100VAC - 240VAC @ 50 - 60Hz / 100W
- operating temperature: -10°C bis +40°C
- dimensions: 180x83x45mm (lxbxh)
- weight: 1160g
- delivery scope: charger, charging cable with claws, instruction manual

features

- convection cooled IP68 housing
- short circuit and reverse polarity protection
- high frequent switching technology
- LED's to indicate operation and charging status
- 4-Step charging technology with automatically restart charging
- safety charging with reduced charging current
- indicating a non-chargeable ('dead battery') condition

Use our configurator for choosing the right model for your vehicle:
www.en.liteblox.de/liteblox-configurator-the-right-battery-for-your-car/

See more informations in our Online-FAQ:
www.en.liteblox.de/frequently-asked-questions-lithium-car-battery/

order directly in our Online-Shop:
www.en.liteblox.de/shop/



Made in Germany

by:

WeightWorks GmbH
Kaltbrunnerstr. 24
D-78476 Allensbach
+49 (0) 7533 / 4959193
info@liteblox-batteries.com
www.liteblox-batteries.com
www.facebook.com/liteblox.batteries